

# FUJITSU THERMAL PRINTER FP-1000



Fujitsu Standalone Thermal Printer, *FP-1000*, achieves high reliability and good cost-efficiency for POS system Receipt printing and Order printing in commercial kitchens.

- High speed 180mm/s & High throughput
- High reliability mechanism
- Small footprint
- Cost saving mode
- Kitchen printer functions
- Horizontal & Vertical Use
- Built-in Power supply model available
- Easy-to-use Installer & Utility
- Fujitsu Super Green Product & RoHS compliance

POS



Coupon



Fiscal



Kitchen



Kiosk



Gaming & Lottery



# Basic Performance



## High Speed print 180mm/s

Printing speed of FP-1000 is the highest in its price range. This is achieved through our advanced mechanical design technology.

## Throughput Enhancement

Optimum driver/firmware technology and High speed paper feed mechanism enhances the throughput. This enables customers not to waste time.

## High Reliability Mechanism

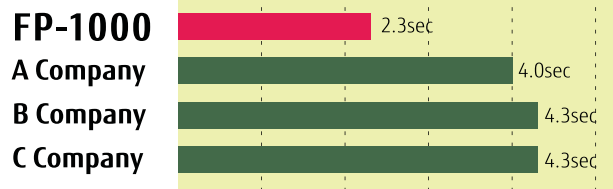
FP-1000 passes the severe quality assurance tests, and ensures longevity with consistent print quality. The reliability is proven by the achievement of ISO9001.



**Auto Cutter Life** 1.5 million cuts  
**Thermal Head Life** 100km  
**Printer (MCBF)** 60million lines

## Comparison of throughput with other companies.

(Time from the start of data transfer to the completion of print)



Print condition: Windows XP,USB Interface, 150mm Receipt length with our test pattern

## Auto Cutter

Auto cutter is included as a standard feature in the FP-1000. The cutting method is partial cut, where the center tab of paper is connected to the next page. This paper tab is small, and it does not spoil the look even after tearing the paper.

## Simple Setup right out of the box

Setup is simple and easy. Just drop in a roll of paper, connect the cable and install the software in the SETUP DISK.

### Accessories in the box

**FP-1000**      **Quick Start Guide**

**CD**  
 • User manual  
 • Driver/Install Software  
 • Utility Software  
 • Status Monitor

**AC Adapter**  
 In case that AC Adapter is externally connected to FP-1000.

**Paper roll for test\***

### Connect cables

Connect the interface cable and AC adapter.

### Switch on

Switch on the printer power.

### Drop-in Paper set

Just throw the paper inside the printer, and close the lid. Paper feeding route is opened, and it makes the maintenance easy.

### Driver/Software Installation

Windows Driver, OPOS Driver and Utility Software can be easily installed. Just follow the user guide in original Installer. IP address setting in Network environment can be quickly and easily setup with standard LAN setup tool.



# Various Functions

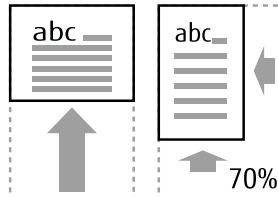


## Running cost can be saved.

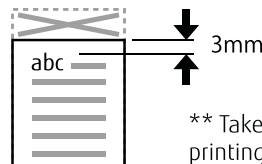
Reduced print function of Windows Driver and Top Margin reduced function save your paper. Running cost and environmental load can be reduced.

### Reduced printing

- 1/4 reduced vertically
- 1/2 reduced vertically
- 80mm width paper  
→ convert to 58mm



### Top Margin 3mm



\*\* Take off each receipt every time after printing in case of 3mm setting.

## Kitchen Printer Functions

FP-1000 has various functions for Commercial Kitchens. Order receipts can be printed for Ordering systems.

### Buzzer beeps when receipt printed.

Buzzer is a standard equipment for the notice of order receipt printed. Various functions like Buzzer On/Off and 5 patterns of beep sound suite versatile restaurant environment.

Ex. You can select different sound patterns for Foods and beverages.



### 180 degree rotation print

180 degree rotation print by Windows Driver is available. You don't need to turn the paper up side down when you use the printer vertically.

## Splash-proof option

When the printer is set on the Kitchen counter, Printer can be set vertically with using optional Splash-proof cover.



## Wall-hanging option

With using Wall hanging bracket, you can set the printer on the wall for saving space in the kitchen.



## Barcode / 2-Dimension code

FP-1000 supports Barcodes and 2-Dimension codes (QR code).

## Large Logo Store Memory

Image data can be stored up to 576KB. You can store several Logo data.

## Versatile Utility

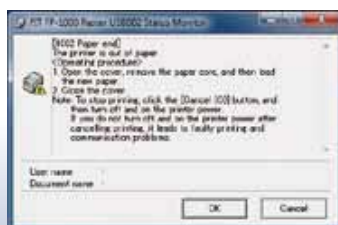
### Printer Setup Utility

The original tool ensures easy setup changes like fonts, Baudrate and others.



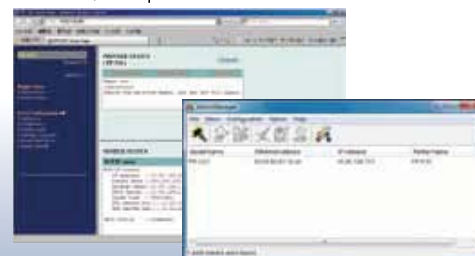
### Status Monitor to notice errors

Any errors like paper out can be notified at once by pop-up notice.



### Utility for LAN Interface

The original tools for network environment are well-supported with using Quick Setup to set IP address, PR-Port Manager, Admin Manager and Popup Status Monitor for LAN. Also, setup from Web Browser is available.



## Small Footprint

### Compact

FP-1000 achieves the compact outline W144xD184xH120mm.

\*\* In case of AC Adapter externally connected. This contributes the small shop which has a limited space for installation. (-13% compared to our company models, the smallest among the same class printers.)



### Easy to store Interface Connector

FP-1000 has a recess to store Interface Connector under the case. This eliminates the space requirement. It is designed not to protrude from the backside view of the printer.



### Built-in Power Supply

Built-in Power Supply model is also available.

Depending on the installation space, various selection is available.



## Flexibility

### Horizontal/Vertical Use

Depending on using environment, FP-1000 can be set horizontally or vertically. When using it vertically, printing direction can be rotated 180 Degrees. Paper near end can be detected for both horizontal and vertical settings.



### Versatile font size like 180dpi emulation size

3 types of Font size such as Font A, B, and C are available. Also, you can flexibly set the font like Extended font with approximately 180dpi size, and select Pitch and Space between characters. (using OPOS Driver)

### Enhanced Drivers

FP-1000 supports Windows® Drivers, OPOS Drivers and JavaPOS™ Drivers.

### Interface

FP-1000 has two models; Dual (RS232C Serial + USB) Interface and LAN Interface.

### Various paper available to print

FP-1000 enables you to choose various kinds of paper; Print Width 58mm/80mm, Maximum outside diameter  $\phi$ 83mm, Paper thickness 65 $\mu$ m~85 $\mu$ m.

## Low-impact to Environment

### Super Green Product

FP-1000 passes our own severe environmental standard, and it is called "Super Green Product". The use of Recyclable material, Material Label attachment and Downsizing supports the environment.



Super green product is the product which complies with Fujitsu group original severe environmental standard

### Not containing Hazardous Substances

In addition to RoHS directives in Europe, FP-1000 complies our own strict standard of Prohibited substance standard.

### Energy Saving

FP-1000 complies with the New Energy Star Program. (Built-in Power Supply Model)

## FUJITSU FP-1000 Specifications

Printing Technology		Direct Line Thermal Method					
Print Resolution		8 dot/mm (0.125mm/dot) 203dpi					
Printing Speed		Maximum 180mm/s (Monochrome only)					
Paper Feed-out Direction		Top feed out					
Cutter Method		Partial cut					
Installation Direction		Two ways (Horizontal / Vertical) *1					
Paper	Paper width	80mm, 58mm,					
	Outer Diameter of Roll Paper	Φ83mm Maximum					
	Paper Thickness	65µm - 85µm					
Maximum Print With	58mm with paper	48mm (384dots) or 52.5mm (420dots)					
	80mm with paper	64mm (512dots) or 72mm (576dots)					
Font size and Column		203dpi(Normal Mode)			Approx. 180dpi (EXTended Mode)		
		Font A (Column)	Font B (Column)	Font C (Column)	Font A (Column)	Font B (Column)	Font C (Column)
Paper with 58mm	Body Face	12x24 (32 or 35)	10x24 (38 or 42) 9 x24 (42 or 46)	8x16 (48 or 52)	12x24 (32 or 35)	10x24 (38 or 42) 9 x24 (42 or 46)	8x16 (48 or 52)
	Letter Face	11x22 (32 or 35)	9 x17 (38 or 42) 9 x17 (42 or 46)	8x13 (48 or 52)	12x24 (32 or 35)	9 x22 (38 or 42) 9 x22 (42 or 46)	8x13 (48 or 52)
Paper with 80mm	Body Face	12x24 (42 or 48)	10x24 (51 or 57) 9 x24 (56 or 64)	8x16 (64 or 72)	12x24 (42 or 48)	10x24 (51 or 57) 9 x24 (56 or 64)	8x16 (64 or 72)
	Letter Face	11x22 (42 or 48)	9 x17 (51 or 57) 9 x17 (56 or 64)	8x13 (64 or 72)	12x24 (42 or 48)	9 x22 (51 or 57) 9 x22 (56 or 64)	8x13 (64 or 72)
Character Sets		ANK(95 char.), International Character(48 char.), Enlarged Graphics(128 char. x 20 pages), Download Character(95 char.),					
Barcode	Barcode	UPC-A, UPC-E, JAN13(EAN), JAN8(EAN), CODE39, ITF, CODABAR(NW-7), CODE93, CODE128					
	Two dimensional code	QR code					
Receive Buffer		Max. 4KB					
Logo Store Memory		Max. 576KB					
Paper Near End & Paper End		Available					
Internal Buzzer		Available to notice errors and printer status					
Interface	Dual (RS232C+USB)	RS232C Serial + USB(2.0 Full-speed)					
	LAN	Wired, 10BASE-T/100BASE-TX					
Software Interface		ESC/POS emulation					
Drawer Interface		2 Drawers Controllable					
Software	Printer Driver	Windows	Windows driver				
		Windows	OPOS driver (Ver.1.13)				
		Windows	JavaPOS driver (Ver.1.10) *3				
	Linux	JavaPOS driver (Ver.1.10) *3					
Printer Utility		Software to set the printer's setup items					
LAN Utility		Quick Setup PR-PortManager(Popup Status Monitor) Admin Manager(Printer Status Monitor, System Status Monitor, IP Address Setup)					

RELIABILITY	MCBF(Mean-cycle-between-failure)	60million Lines *2
	Print Head	100km *2
	Cutter Life	1.5 million times of partial cut (Recommended Normal paper use) *2

Power Requirements	DC Input: +24VDC±10% AC Input: 100 - 240V, 50/60Hz, Single Phase
Power Consumption	During standby Dual Interface:3W or less, LAN Interface:4.5W or less Average during operating 38W or less, Maximum 150W or less
Ambient Temperature	Operation guarantee: 0 °C to 40°C Print quality guarantee: 5 °C to 35°C
Relative Humidity	Operation guarantee: 10 % RH to 95% RH Print quality guarantee: 10 % RH to 85% RH
Dimensions	- Standard Model: 144(W)x184(D)x120(H)mm, 5.7(W)x7.2(D)x4.7(H) inch - Built-in Power Supply model: 144(W)x184(D)x165(H)mm, 5.7(W)x7.2(D)x6.5(H) inch
Weight (without the packing box)	Standard Model: 1.2kg, Built-in Power Supply model: 1.7kg
Cover Color	Black & White
Option	Splash-proof cover, Wall hanging bracket

\*1 When using printer vertically, connectors of AC cable and Interface cable should be under the printer case. (The connector of AC Cable should be "Angled" shape.)

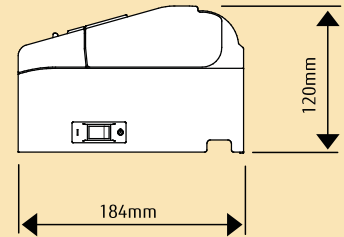
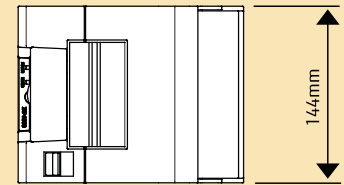
\*2 Operation condition is under 500 transactions/day(1transaction=25LF + 1cut), 340days/year, print duty less than 9%, and the life of Head or Cutter with using specified paper by our company. If unspecified paper is used, the life of printer might be shortened than expected. Also, it might cause trouble for the printer.

\*3 JavaPOS Driver supports RS232C Interface and USB Interface

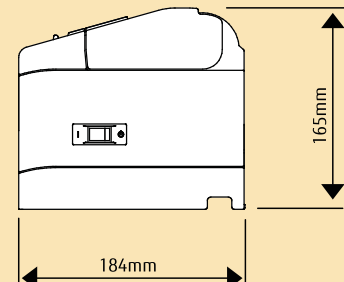
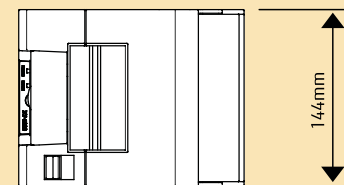
All specifications are subject to change without notice.

## Dimensions

Standard Model



Built-in Power Supply Model



JMI-0046

## FUJITSU ISOTEC LIMITED.

Printer Business Division  
135, Higashinozaki, Hobara-machi, Date-shi, Fukushima  
960-0695, JAPAN.  
Phone : (81-24)574-2236 Fax : (81-24)574-2382  
U R L : <http://jp.fujitsu.com/group/fit/en/>  
Contact E-mail : [fit-gsm@cs.jp.fujitsu.com](mailto:fit-gsm@cs.jp.fujitsu.com)